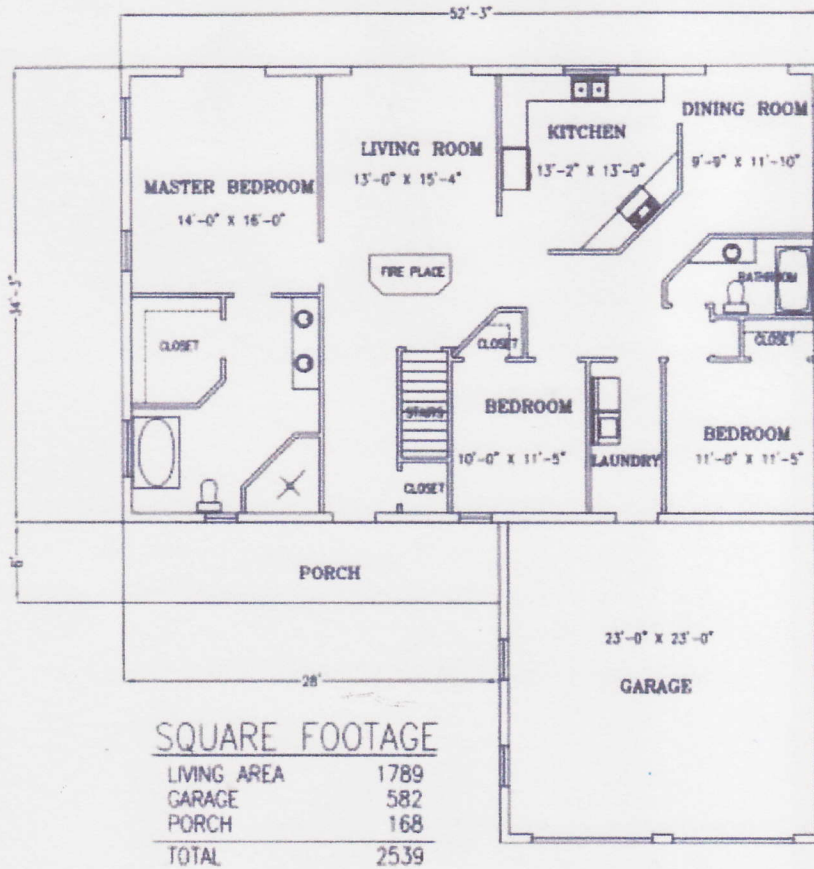


THE HARTWELL



Clearspan straight ranch with 2 baths, oversize garage and a covered front porch, offers a floor plan that is totally adjustable to your needs. This home was built on a basement, with a rear porch overlooking Lake Hartwell. This model like many REPco models is available with vaulted ceilings.



METAL BUILDING ERECTORS
CUSTOM STEEL BLD.
METAL ROOFING
FENCING