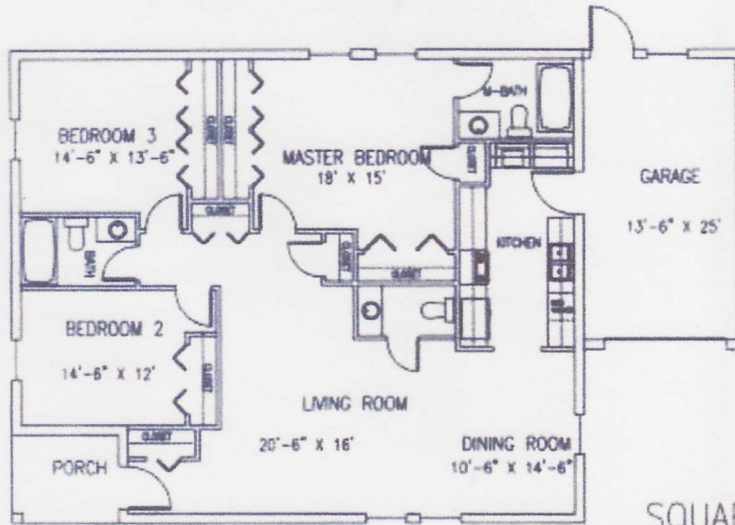


THE GARDNER



SQUARE FOOTAGE

LIVING AREA	1437
GARAGE	267
PORCH	52
TOTAL	1756

The Gardner is an ideal starter, city home, layed out in row style. It features a very efficient floorplan featuring 3 bedrooms and 2 1/2 baths and a single car garage. With it's narrow width 35'-3" and garage in the rear, it is ideal for narrow lots. Homes are available in widths a small as 24'.



METAL BUILDING ERECTORS
CUSTOM STEEL BLD.
METAL ROOFING
FENCING.

P.O. Box 603
1220 E. Hwy. 199
Springtown, Texas 76082
www.wdcbuildings.com

Phone 817-220-2150
Fax 817-523-0116
JoshSextonWDC@yahoo.com